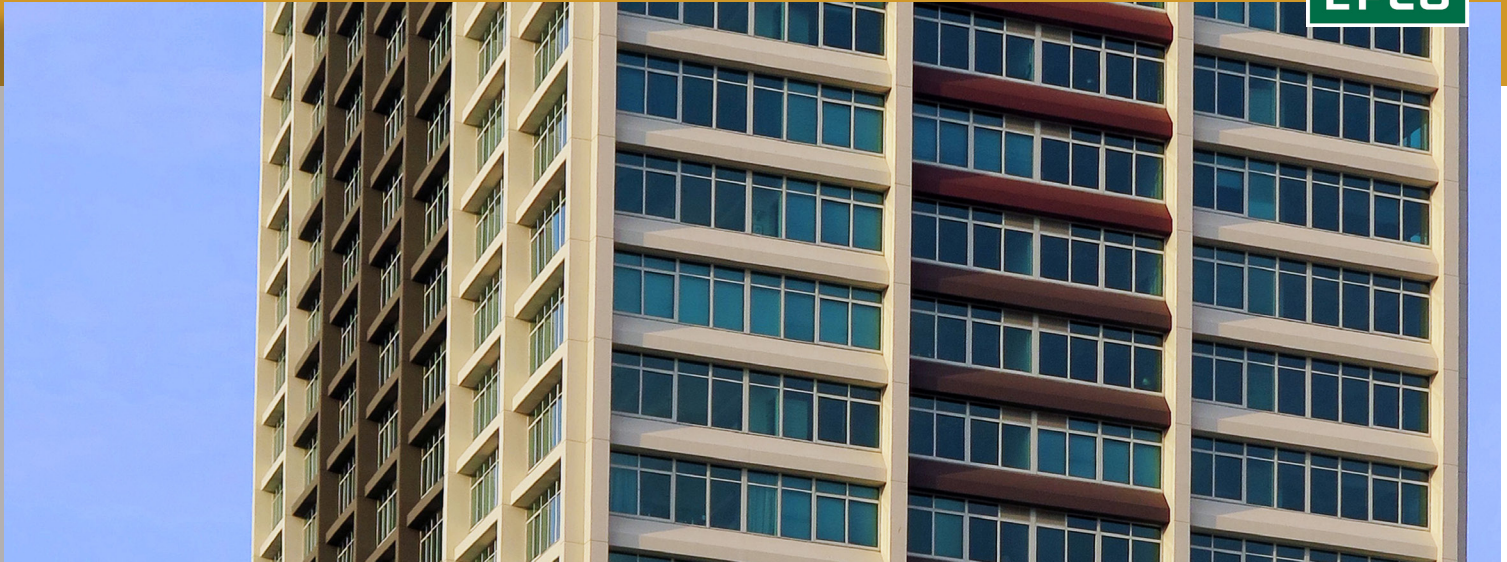
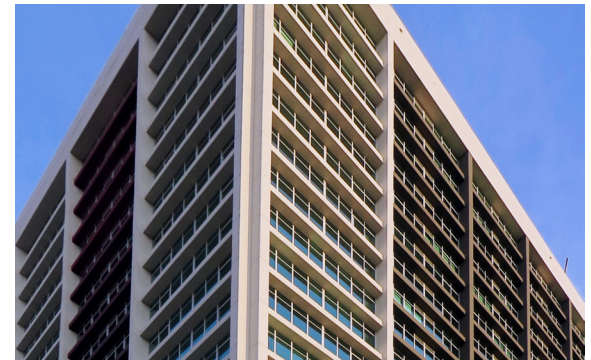


SERIES 3900 FIXED WINDOW



The series 3900 window is a 3-1/4" deep fixed window designed for commercial, local government, and education applications. The 3900 utilizes a urethane thermal barrier, combined with ultra-low air infiltration, to enhance occupant comfort and energy savings. Offered with a complete line of subframes, mullions, and architectural sills, the series 3900 is a flexible option in today's retrofit and new construction markets.



| | | | |
|---|--|---|--|
| AAMA RATING (A440) AW110 | | STRUCTURAL LOAD (ASTM E330) +/- 165 PSF | |
| AIR INFILTRATION (ASTM E283) <0.10 CFM/FT ² | | WATER RESISTANCE (ASTM E547 & E331) 15 PSF | |
| U-FACTOR* (ANSI/NFRC 100/200) 0.22 - 0.54 | | CRF (AAMA 1503) 62 | |
| STC* (ASTM E90 & E413) 33 - 36 | | OITC* (ASTM E90 & E413) 29 - 30 | |
| FORCED ENTRY (ASTM F588 OR F842) GRADE: 10 | | ACCESSIBILITY (AAMA 513) N/A | |

STANDARD FEATURES

- System depth: 3-1/4"
- Mulls to products of the same system depth
- Nominal wall thickness: 0.090"
- Anodized and painted finishes available
- Glass thickness range: 1" - 2-3/4"
- Panning/Trim: Available
- Subframe/Receptor system: Available
- Architectural sills: Available
- Mullions:
 - 3 piece mullions
 - Stacking mullions

* Performance dependent on glass selection. Please contact your EFCO sales rep for project specific performance.